

MOVE OVER KNITS THERE'S A NEW WIPE IN TOWN

MICROPOLX® NONWOVEN MICROFIBER TECHNOLOGY

Introducing MicroPolx® nonwoven cleanroom wipes, a first-generation technology featuring a leading edge innovative manufacturing process of 100% polyester microfiber wet-laid nonwoven performance material.

This wiper is a game changer compared to common spunlaced nonwoven options. Available in dry, presaturated, validated sterile, and low endotoxin options, Berkshire's MicroPolx® nonwoven microfiber wipers offer a complete line for all your ISO Class 5 and above applications.

TECHNOLOGY

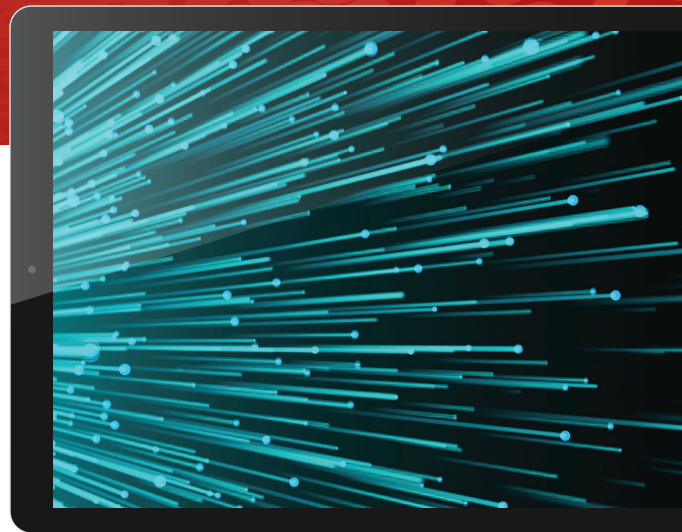
MicroPolx® Nonwoven
Microfiber Technology

ADVANTAGES

- Extremely soft hand
- Mechanical strength
- Anti-scratch
- Multi - directional layering
- Chemical compatibility
- Lot to lot traceability

RESULTS

Cleans sensitive surfaces without damage while maximizing particle pickup and retention. Superior microfiber contamination removal performance.



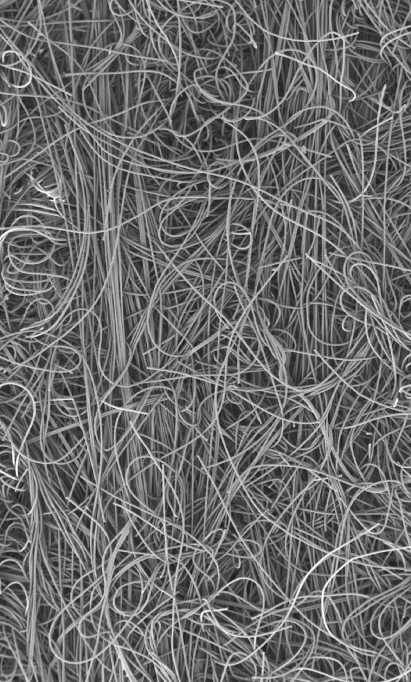
MicroPolx®
NONWOVEN ADVANCED WIPER TECHNOLOGY

Micropolix®

NONWOVEN WIPES

TECHNICAL DATA & ORDER INFORMATION

RECOMMENDED FOR ISO CLASS 5 AND ABOVE APPLICATIONS



MICROFILAMENTS 4.5 TIMES FINER THAN COMMON POLYESTER FILAMENTS FOR SUPERIOR UNIFORMITY

BASIS WEIGHT		CALIPER	FIBERS	PARTICLES ≥ 0.5µm	SORBENCY		NON-VOLATILE RESIDUE			IONS				
g/m ²	µm	µm	≥100µm/cm ²	x10 ³ /cm ²	CAPACITY ml/m ²	EFFICIENCY ml/g	RATE SECONDS	H ₂ O (g/m ²)	IPA (g/m ²)	Na ⁺	K ⁺	Ca ⁺⁺	Mg ⁺⁺	Cl ⁻
52.2	198		18.8	1.6	234	4.5	6.0	0.0044	0.0040	37	5.3	48	9.3	48

DRY WIPER, STACKED

ITEM NUMBER PRODUCT/PACKAGING

MPNW50090920 **Micropolix® NW – 9x9"** (23x23cm)
300 SHTS /PK, 20 PKS/CS

MPNW50121220 **Micropolix® NW – 12x12"** (30x30cm)
150 SHTS /PK, 20 PKS/CS

DRY WIPER, VALIDATED STERILE, LOW ENDOTOXIN

ITEM NUMBER PRODUCT/PACKAGING

GWMPNW5T25LE **GammaWipe® MP NW – 12x12"** (30x30cm)
20 SHTS /PK, 25 PKS/CS

70% IPA/30% DI H2O, 45% AND 60% SATURATION OPTIONS

ITEM NUMBER PRODUCT/PACKAGING

SPXMPNW500112 **SatPax® MP NW – 9x9"** (23x23cm)
75 SHTS /PK, 12 PKS/CS

SPXMPNW500112R **SatPax® MP NW – 9x9"** (23x23cm)
75 SHTS /PK, 12 PKS/CS

VALIDATED STERILE, 70% IPA/30% DI H2O, 60% SATURATION

ITEM NUMBER PRODUCT/PACKAGING

SSPMPNW500124 **Sterile SatPax® MP NW – 9x9"** (23x23cm)
30 SHTS /PK, 24 PKS/CS

Notes:

- Technical data represented in this table are typical values at the time of publication. These should not be used as product specifications.
- Due to differences in test methods applied and equipment utilized by different wiper manufacturers, valid product comparisons may only be obtained through side-by-side testing in the same test facility, under similar conditions.
- Third party testing can be performed upon request.